



Excelbis Labs
1920 E Warner Avenue
Santa Ana, CA 92705

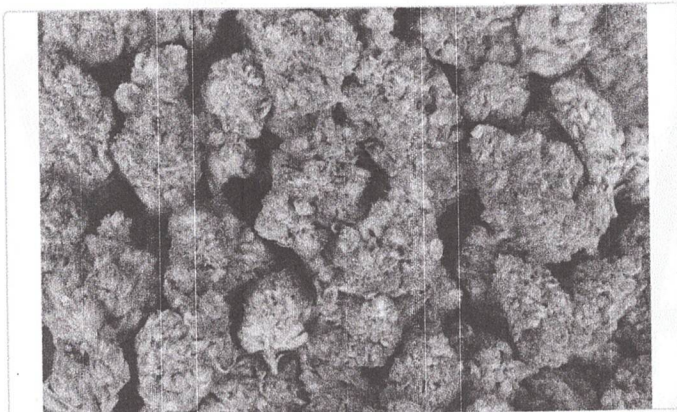
(714) 340-7099
http://excelbislabs.com
Lic# C8-0000059-LIC

Cinderella OG

Sample ID: 2501EXL0409.1617
Strain: Cinderella OG
Matrix: Plant
Type: Flower - Cured
Sample Size: ; Batch:

Produced:
Collected:
Received:
Completed: 01/28/2025
Batch#: 2025Q1COG

Client
HSP
Lic. #
1835 NEWPORT BLVD
COSTA MESA, CA 92627



Summary

Test	Date Tested	Result
Batch		Pass
Cannabinoids		Complete
Foreign Matter	01/28/2025	Pass
Heavy Metals		Pass
Microbials		Pass
Mycotoxins		Pass
GCMS Pesticides		Pass
LCMS Pesticides		Pass

Cannabinoids

Complete

23.241% Total THC	0.016% Total CBD	23.328% Total Cannabinoids
-----------------------------	----------------------------	--------------------------------------

Analyte	LOD	LOQ	Result	Result
	mg/g	mg/g	%	mg/g
CBC	0.009	0.025	0.0561	0.561
CBD	0.025	0.100	0.0164	0.164
CBDa	0.019	0.050	ND	ND
CBDV	0.125	1.000	ND	ND
CBDVa	0.257	0.780	ND	ND
CBG	0.019	0.050	0.0144	0.144
CBGa	0.125	0.250	ND	ND
CBN	0.009	0.050	ND	ND
Δ8-THC	0.025	0.100	ND	ND
Δ9-THC	0.019	0.100	0.2952	2.952
THCa	0.013	0.050	26.1635	261.635
THCV	0.025	0.100	ND	ND
Total THC			23.241	232.406
Total CBD			0.016	0.164
Total CBG			0.014	0.144
Total			23.328	233.276

Date Tested:

Total THC = THCa * 0.877 + Δ9-THC + Δ8-THC; Total CBD = CBDa * 0.877 + CBD; Total CBG = CBGa * 0.877 + CBG.
Total Cannabinoids = Total THC + Total CBD + Total CBG + minor cannabinoids.
Cannabinoids: HPLC, CAN-SOP-001
Water Activity: Water Activity Meter, WA-SOP-001
Moisture Content: Moisture Analyzer, MO-SOP-001
Foreign Matter: Visual Inspection, FM-SOP-001



Dr. Jerry White PhD Bryan Zahakaylo

Jerry White, PhD
Chief Scientific Officer
01/28/2025

Bryan Zahakaylo
Analyst
01/28/2025

Confident LIMS
All Rights Reserved
coa.support@confidentlms.com
(866) 506-5866
www.confidentlms.com



ND = Not Detected, NR = Not Reported, LOD = Limit of Detection, LOQ = Limit of Quantitation. This product has been tested by Excelbis Labs LLC using valid testing methodologies and a quality system as required by state law. All LQC samples were performed and met the prescribed acceptance criteria in 16 CCR section 5730, pursuant to 16 CCR section 5726(e)(13). Values reported relate only to the product tested. Excelbis Labs LLC makes no claims as to the efficacy, safety or other risks associated with any detected or non-detected levels of any compounds reported herein. This Certificate shall not be reproduced except in full, without the written approval of Excelbis Labs LLC. This Certificate of Analysis is limited to the sample tested in a batch. This Certificate does not make any representation or warranty for all Products within the tested Batch.



Excelbis Labs
1920 E Warner Avenue
Santa Ana, CA 92705

(714) 340-7099
http://excelbislabs.com
Lic# C8-0000059-LIC

Cinderella OG

Sample ID: 2501EXL0409.1617
Strain: Cinderella OG
Matrix: Plant
Type: Flower - Cured
Sample Size: ; Batch:

Produced:
Collected:
Received:
Completed: 01/28/2025
Batch#: 2025Q1COG

Client
HSP
Lic. #
1835 NEWPORT BLVD
COSTA MESA, CA 92627

GC Pesticides

Pass

Analyte	LOD	LOQ	Limit	Mass	Status
	µB/g	µg/g	µg/g	µg/g	
Captan	0.231	0.7	0.7	ND	Pass
Chlordane (trans + cis)	0.0116	0.035	0.0116	ND	Pass
Chlorfenapyr	0.0058	0.0175	0.0058	ND	Pass
Cyfluthrin	0.0231	0.07	2	ND	Pass
Cypermethrin	0.0231	0.07	1	ND	Pass
Parathion Methyl	0.0058	0.0175	0.0058	ND	Pass
Pentachloronitrobenzene (Quintozene)	0.0231	0.07	0.1	ND	Pass

Mycotoxins

Pass

Analytes	LOD	LOQ	Limit	Conc.	Status
	PPB	PPB	PPB	PPB	
Aflatoxin B1	1.7000	5.0000		ND	Tested
Aflatoxin B2	1.7000	5.0000		ND	Tested
Aflatoxin G1	1.7000	5.0000		ND	Tested
Aflatoxin G2	1.7000	5.0000		ND	Tested
Ochratoxin A	6.6000	20.0000	20	ND	Pass
Total Aflatoxins			20	ND	Pass

Microbials

Pass

Analyte	Limit	Detected / Not Detected	Status
	RFU/g	RFU/g	
Aspergillus flavus	0	Not Detected	Pass
Aspergillus fumigatus	0	Not Detected	Pass
Aspergillus niger	0	Not Detected	Pass
Aspergillus terreus	0	Not Detected	Pass
Shiga toxin-producing E. Coli	0	Not Detected	Pass
Salmonella SPP	0	Not Detected	Pass

Heavy Metals

Pass

Analyte	LOD	LOQ	Limit	Conc.	Status
	PPM	PPM	PPM	PPM	
Arsenic	0.0150	0.05	0.2	ND	Pass
Cadmium	0.0113	0.05	0.2	ND	Pass
Lead	0.00615	0.05	0.5	ND	Pass
Mercury	0.00126	0.005	0.1	ND	Pass

GCMS Date Tested:

Pesticides: GC-MS/MS, GCMS Method GCP-SOP-001

LCMS Date Tested:

Mycotoxins Footnote: Mycotoxins: LC-MS/MS, LCMS Method LCP-SOP-001

Microbial Date Tested:

Microbials Footnote: Microbial: PCR-SOP-001

RFU = Relative Fluorescence Units

Heavy Metals Date Tested:

Heavy Metals: Heavy Metals: ICP-MS, HM-SOP-001



Dr. Jerry White PhD Bryan Zahakaylo

Jerry White, PhD
Chief Scientific Officer
01/28/2025

Bryan Zahakaylo
Analyst
01/28/2025

Confident LIMS
All Rights Reserved
coa.support@confidentlms.com
(866) 506-5866
www.confidentlms.com



ND = Not Detected, NR = Not Reported, LOD = Limit of Detection, LOQ = Limit of Quantitation. This product has been tested by Excelbis Labs LLC using valid testing methodologies and a quality system as required by state law. All LQC samples were performed and met the prescribed acceptance criteria in 16 CCR section 5730, pursuant to 16 CCR section 5726(e)(13). Values reported relate only to the product tested. Excelbis Labs LLC makes no claims as to the efficacy, safety or other risks associated with any detected or non-detected levels of any compounds reported herein. This Certificate shall not be reproduced except in full, without the written approval of Excelbis Labs LLC. This Certificate of Analysis is limited to the sample tested in a batch. This Certificate does not make any representation or warranty for all Products within the tested Batch.



Excelbis Labs
1920 E Warner Avenue
Santa Ana, CA 92705

(714) 340-7099
http://excelbislabs.com
Lic# C8-0000059-LIC

Cinderella OG

Sample ID: 2501EXL0409.1617
Strain: Cinderella OG
Matrix: Plant
Type: Flower - Cured
Sample Size: ; Batch:

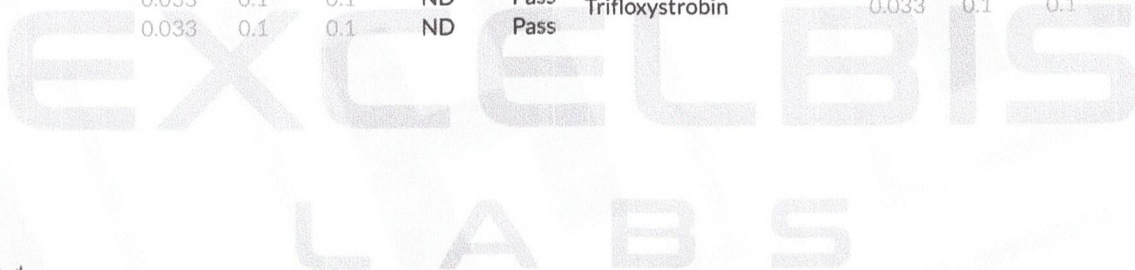
Produced:
Collected:
Received:
Completed: 01/28/2025
Batch#: 2025Q1COG

Client
HSP
Lic. #
1835 NEWPORT BLVD
COSTA MESA, CA 92627

LC Pesticides

Pass

Analyte	LOD	LOQ	Limit	Result	Status	Analyte	LOD	LOQ	Limit	Result	Status
	µg/g	µg/g	µg/g	µg/g			µg/g	µg/g	µg/g	µg/g	
Abamectin	0.033	0.1	0.1	ND	Pass	Imazalil	0.033	0.1	0.033	ND	Pass
Acephate	0.033	0.1	0.1	ND	Pass	Imidacloprid	0.033	0.1	5	ND	Pass
Acequinocyl	0.033	0.1	0.1	ND	Pass	Kresoxim Methyl	0.033	0.1	0.1	ND	Pass
Acetamiprid	0.033	0.1	0.1	ND	Pass	Malathion	0.033	0.1	0.5	ND	Pass
Aldicarb	0.033	0.1	0.033	ND	Pass	Metalaxyl	0.033	0.1	2	ND	Pass
Azoxystrobin	0.033	0.1	0.1	ND	Pass	Methiocarb	0.033	0.1	0.033	ND	Pass
Bifenazate	0.033	0.1	0.1	ND	Pass	Methomyl	0.033	0.1	1	ND	Pass
Bifenthrin	0.033	0.1	3	ND	Pass	Mevinphos	0.033	0.1	0.033	ND	Pass
Boscalid	0.033	0.1	0.1	ND	Pass	Myclobutanil	0.033	0.1	0.1	ND	Pass
Carbaryl	0.033	0.1	0.5	ND	Pass	Naled	0.033	0.1	0.1	ND	Pass
Carbofuran	0.033	0.1	0.033	ND	Pass	Oxamyl	0.033	0.1	0.5	ND	Pass
Chlorantraniliprole	0.033	0.1	10	ND	Pass	Paclobutrazol	0.033	0.1	0.033	ND	Pass
Chlorpyrifos	0.033	0.1	0.033	ND	Pass	Permethrin (trans + cis)	0.033	0.1	0.5	ND	Pass
Clofentezine	0.033	0.1	0.1	ND	Pass	Phosmet	0.033	0.1	0.1	ND	Pass
Coumaphos	0.033	0.1	0.033	ND	Pass	Piperonyl Butoxide	0.033	0.1	3	ND	Pass
Daminozide	0.033	0.1	0.033	ND	Pass	Prallethrin	0.033	0.1	0.1	ND	Pass
Diazinon	0.1	0.1	0.1	ND	Pass	Propiconazole	0.033	0.1	0.1	ND	Pass
Dichlorvos	0.033	0.1	0.033	ND	Pass	Propoxur	0.033	0.1	0.033	ND	Pass
Dimethoate	0.033	0.1	0.033	ND	Pass	Pyrethrins (Cinerin + Jasmolin + Pyrethrin)	0.0133	0.04	0.5	ND	Pass
Dimethomorph (I + II)	0.033	0.1	2	ND	Pass	Pyridaben	0.033	0.1	0.1	ND	Pass
Ethoprophos	0.033	0.1	0.033	ND	Pass	Spinetoram (J + L)	0.033	0.1	0.1	ND	Pass
Etofenprox	0.033	0.1	0.033	ND	Pass	Spinosyn (A + D)	0.033	0.1	0.1	ND	Pass
Etoxazole	0.033	0.1	0.1	ND	Pass	Spiromesifen	0.033	0.1	0.1	ND	Pass
Fenhexamid	0.033	0.1	0.1	ND	Pass	Spirotetramat	0.033	0.1	0.1	ND	Pass
Fenoxycarb	0.033	0.1	0.033	ND	Pass	Spiroxamine	0.033	0.1	0.033	ND	Pass
Fenpyroximate	0.033	0.1	0.1	ND	Pass	Tebuconazole	0.033	0.1	0.1	ND	Pass
Fipronil	0.033	0.1	0.033	ND	Pass	Thiacloprid	0.033	0.1	0.033	ND	Pass
Flonicamid	0.033	0.1	0.1	ND	Pass	Thiamethoxam	0.033	0.1	5	ND	Pass
Fludioxonil	0.033	0.1	0.1	ND	Pass	Trifloxystrobin	0.033	0.1	0.1	ND	Pass
Hexythiazox	0.033	0.1	0.1	ND	Pass						



LCMS Date Tested:
Pesticides: LC-MS/MS. LCMS Method LCP-SOP-001



Dr. Jerry White PhD *Bryan Zahakaylo*

Jerry White, PhD
Chief Scientific Officer
01/28/2025

Bryan Zahakaylo
Analyst
01/28/2025

Confident LIMS
All Rights Reserved
coa.support@confidentlims.com
(866) 506-5866
www.confidentlims.com



ND = Not Detected, NR = Not Reported, LOD = Limit of Detection, LOQ = Limit of Quantitation. This product has been tested by Excelbis Labs LLC using valid testing methodologies and a quality system as required by state law. All LQC samples were performed and met the prescribed acceptance criteria in 16 CCR section 5730, pursuant to 16 CCR section 5726(e)(13). Values reported relate only to the product tested. Excelbis Labs LLC makes no claims as to the efficacy, safety or other risks associated with any detected or non-detected levels of any compounds reported herein. This Certificate shall not be reproduced except in full, without the written approval of Excelbis Labs LLC. This Certificate of Analysis is limited to the sample tested in a batch. This Certificate does not make any representation or warranty for all Products within the tested Batch.